

CSA/AIA

The Connecticut Society of Architects / A chapter of the American Institute of Architects

1986 Design Awards

Celebrating the accomplishments of Connecticut architects and the excellence of Connecticut architectural projects.

JURORS

Rodolfo Machado, Machado Silvetti
John H. Burgee, FAIA, John Burgee and Associates
Fred H. Koetter, AIA, Koetter, Kim and Associates

SPECIAL AWARD FOR HISTORIC PRESERVATION

Senate Chamber Renovations, Connecticut State Capitol Building, Hartford, CT
D.C. Cimino, AIA, Hartford, CT

AWARDS

Bathhouse Facility, Meig's Point, Hammonasset State Park, Madison, CT
Straus-Edwards Associates, Woodbury, CT

Ceraland Recreational Center, Columbus, IN
Roth & Moore Architects, New Haven, CT

Hertz Turnaround Facility, Windsor Locks, CT
Tai Soo Kim Associates, Hartford, CT

Library/Science Building, Westover School, Middlebury, CT
Gwathmey Siegel & Associates, Architects, New York, NY

National Museum of Modern Art, Seoul, Korea
Tai Soo Kim Associates, Hartford, CT

Residence, Farmington, CT
Richard Herzer with Suzanne Sheng, Farmington, CT

Rosewalk, a Residential Development, Seaside, FL
Orr and Taylor Architects, New Haven, CT

CITATION AWARDS

Olin Memorial Library, Wesleyan University, Middletown, CT
Perry, Dean, Rogers & Partners, Boston, MA

Mill River Office Building, Southport, CT
Roger P. Ferris, AIA, Southport, CT

CSA/AIA

The Connecticut Society of Architects / A chapter of the American Institute of Architects

1986 Design Awards

Senate Chamber Renovations, Connecticut State Capitol Building, Hartford, CT
D.C. Cimino, AIA, Hartford, CT

No photo available

Jury comments: *An extremely sensitive restoration...an attempt to put the space back to what they thought was there originally.*

CSA/AIA

The Connecticut Society of Architects / A chapter of the American Institute of Architects

1986 Design Awards

Bathroom Facility, Meig's Point, Hammonasset State Park, Madison, CT
Straus-Edwards Associates, Woodbury, CT



Photographer: John Lessna

Jury comments: *In almost every way, it looks like what you would expect it to be. The architect resisted the temptation to stylize the building type. The simplicity and straightforwardness of detail is appealing. It has a fresh and bright image, just the right image for the function, not contrived and well built.*

CSA/AIA

The Connecticut Society of Architects / A chapter of the American Institute of Architects

1986 Design Awards

Ceraland Recreational Center, Columbus, IN
Roth & Moore Architects, New Haven, CT



Photographer: Balthazer Korab Photography

Jury comments: An extremely clear organization and good site planning. It is very well detailed, particularly the roof structure. The concrete wall and roof structure heightens the contrast between the base and the top.

CSA/AIA

The Connecticut Society of Architects / A chapter of the American Institute of Architects

1986 Design Awards

Hertz Turnaround Facility, Windsor Locks, CT
Tai Soo Kim Associates, Hartford, CT



Photographer: Tai Soo Kim

Jury comments: *The architect used an inventive choice of materials. It is a distinctive form without straining. It looks "speedy." There's a lot of association with road architecture in the showroom. The character is well suited to its function. The three exterior systems, siding, glazing and canopy are extremely straight forward, lucid and well detailed.*

CSA/AIA

The Connecticut Society of Architects / A chapter of the American Institute of Architects

1986 Design Awards

Library/Science Building, Westover School, Middlebury, CT
Gwathmey Siegel & Associates, Architects, New York, NY



Photographer: Timothy Hursley

Jury comments: *The site planning strategy is very good. The idea of extending the wall from the main cloister as a means of qualifying the buildings allows for a lot of great possibilities for future expansion.*

CSA/AIA

The Connecticut Society of Architects / A chapter of the American Institute of Architects

1986 Design Awards

National Museum of Modern Art, Seoul, Korea
Tai Soo Kim Associates, Hartford, CT



Photographer: Tai Soo Kim

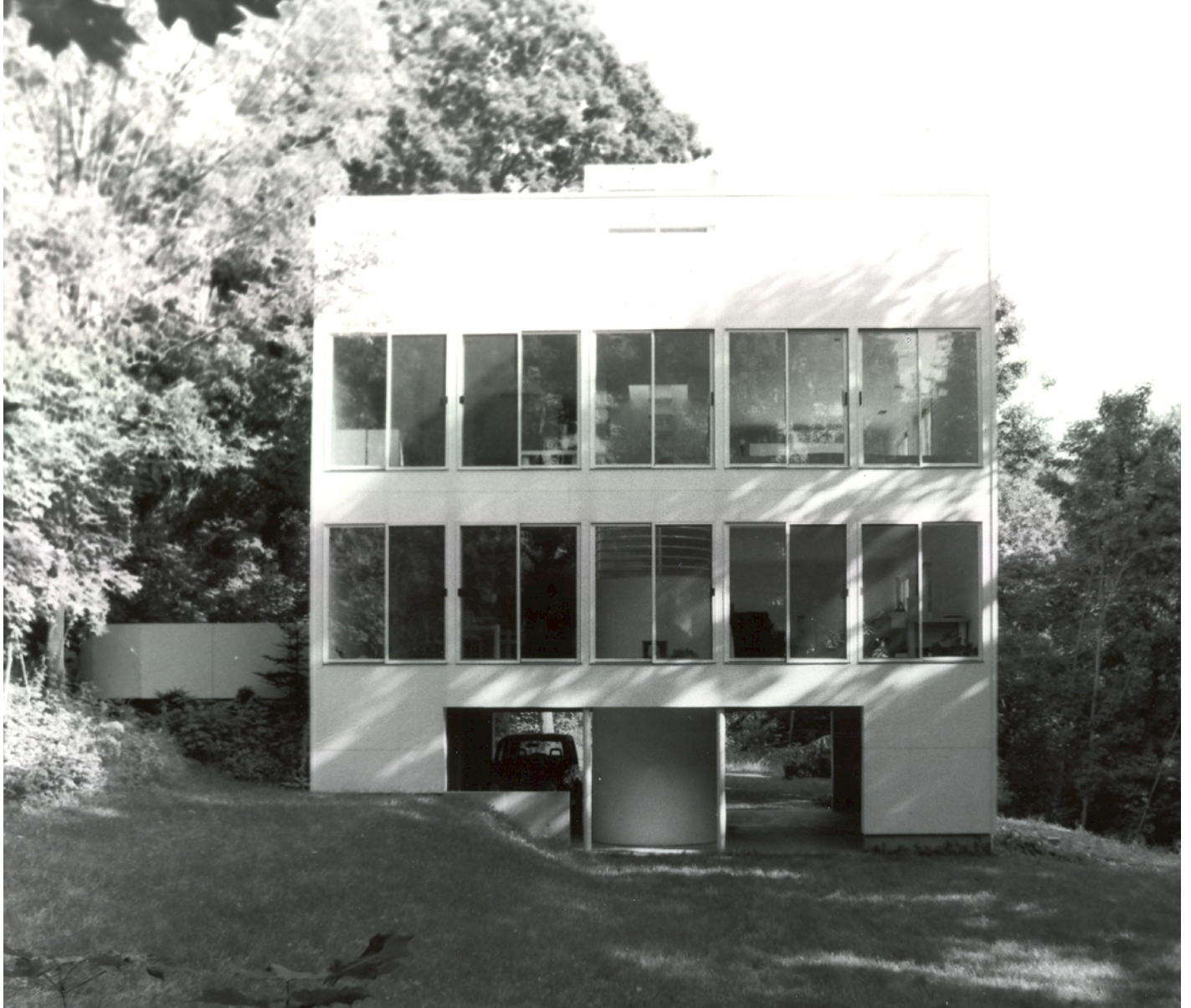
Jury comments: *The organization of the spaces is so clear. The detailing and quality of construction is commended. It is almost a classic plan, well fitted to the landscape, silhouetted against the mountains.*

CSA/AIA

The Connecticut Society of Architects / A chapter of the American Institute of Architects

1986 Design Awards

Private Residence, Farmington, CT
Richard Herzer with Suzanne Sheng, Farmington, CT



Photographer: Richard Herzer

Jury comments: The architect used a very creative choice of very common building products. Using plywood in a way to give a feeling of real substance to a thin material is remarkable. The image is very refined, cool and not condescending.

CSA/AIA

The Connecticut Society of Architects / A chapter of the American Institute of Architects

1986 Design Awards

Rosewalk, a Residential Development, Seaside, FL
Orr and Taylor Architects, New Haven, CT



Photographer: Mike Hales Photography

Jury comments: *There were a large number of submissions which simulated the vernacular tradition and this one stood out. The general detailing is very pleasant. The technical resolution of the building makes it believable. The myth will extend.*

CSA/AIA

The Connecticut Society of Architects / A chapter of the American Institute of Architects

1986 Design Awards

Olin Memorial Library, Wesleyan University, Middletown, CT
Perry, Dean, Rogers & Partners, Boston, MA



Photographer: Steve Rosenthal

Jury comments: A nice execution, an accomplished project. The relationship established between the old exterior wall, which becomes the new interior wall, and the new exterior wall is provocative...it provokes all kind of ideas. It is a very clear strategy, which is well built...an excellent way of adding to a classical building.

CSA/AIA

The Connecticut Society of Architects / A chapter of the American Institute of Architects

1986 Design Awards

Mill River Office Building, Southport, CT
Roger P. Ferris, AIA, Southport, CT

No photo available

Jury comments: *The idea on which the building is based is very clear, strong and good. The building should be praised for its restraints of the character it achieves. In the suburban office environment, there are many of these types of buildings, which attempt to refer to certain traditional. Of that kind, this is very successful in its simplicity.*