

PET HABITAT

Size

Weight: Male: 13-18 lbs. (Adult), Female: 7.9-12 lbs.

(Adult)Length: 38-41 in.

Diet

Maine Coons do not generally need a specialized diet. A good rule of thumb for any cat's diet is to feed a high quality dry-food mixed with the occasional wet food (2-3 times a week).

Lifespan

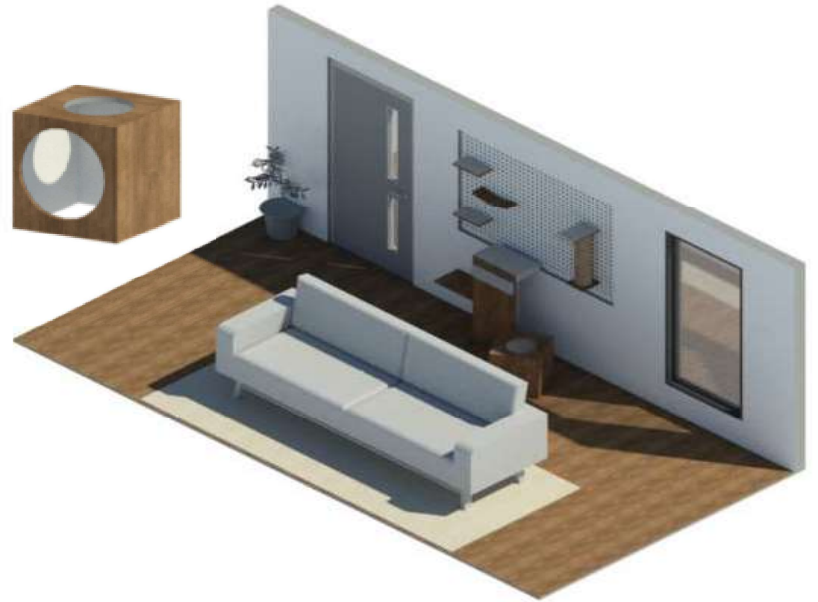
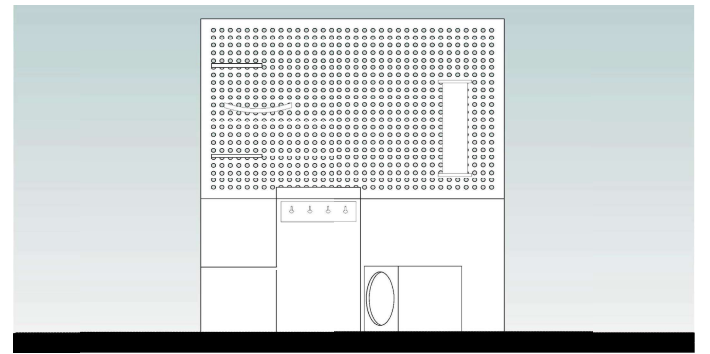
10-13 Years

Origin

Largest domesticated cat breed. It has a distinctive physical appearance and valuable hunting skills. The breed was popular in cat shows in the late 19th century, but its existence became threatened when long-haired breeds from overseas were introduced in the early 20th century.

Characteristics

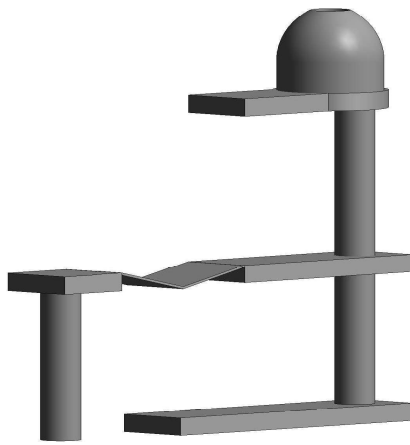
- Dense water-resistant fur longer and shaggier on their underside and rear for extra protection when they are walking or sitting on top of wet surfaces of snow or ice.
- Long and bushy raccoon-like tail is resistant to sinking in snow, and can be curled around their face and shoulders for warmth and protection from wind and blowing snow.
- Large paws
- Sweet and gentle temperament
- Kitten-like personality



PET HABITAT

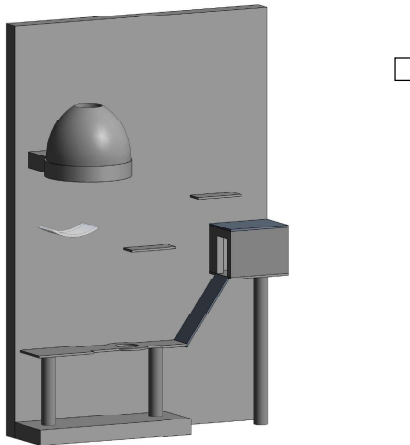
Final Iteration Concept

The idea for this design was to re-imagine what the traditional cat tree is. The Maine Coon cat is not only the largest domesticated cat breed, but also the most intelligent. Due to this, as well as their "kitten-like" personality that lasts well into adulthood, I wanted to create a space that has an infinite number of combination of various platforms and other enrichment items to keep them entertained. The pegboard allows for the owner to swap out various elements such as platforms, scratching posts, and hiding pods so that as the cat grows and changes, so does the way they play.



First Iteration:

The first iteration for the pet habitat was based off of a traditional cat tree. The idea was to make a free-standing structure comprised of a series of platforms supported by scratching posts. Atop the post on the highest platform is a dome where the cat can rest. This iteration caters to a cat's natural desire to climb and be perched at a higher vantage point. Though this design does satisfy the needs of the pet, as it is relatively simple- in both form and construction- it does not make much of an impact. The idea to reinvent how the cat tree then lead to my second design iteration.



Second Iteration:

The second iteration combined the traditional cat tree with a wall mounted climbing system. This design includes the same scratching posts supporting a platform with an area cut out to place a water bowl and a ramp leading up to a napping pod. Platforms fixed to the wall lead up to a lookout dome cantilevering out of the dome. Though this design does include more dynamic series of elements, it does have a limitation as to where it can be installed and the amount of holes that will be drilled into the wall.



Interchangeable Elements

Materials:

- Twine
- Carpet
- 3/4" Wood
- Pegboard
- Wooden dowels

